



## Saksham 345

THREE PHASE SMART METER  
WITH INTEGRATED CELLULAR / RF MODULE

SKM 345 is an ideal fit for Advance Metering Infrastructure (AMI) systems intended for load management, multi-rate/Time-of-Use and anti-theft metering of residential and light commercial consumers with Three-phase service connections. It measures, collects, analyzes, controls energy usage and communicates with Head End System either on request or on a schedule. This gives unparalleled end-to-end visibility to the utilities into their distribution networks.

## FEATURES

### METERING FEATURES

- Three Phase direct connected smart meter
- Flip-Flop between postpaid to prepaid & vice-versa
- Token-less System
- Android application for consumers to view Consumption Details
- Accuracy Class 1.0
- Maximum Demand kW measurement
- TOU metering having two seasons with upto 8-registers and 8 time zones per day
- Last 6 months billing history
- Last 35 days load profile data and daily energy profile data
- Voltage Sags, Swells, Long power failures, Event logging & Power quality
- Transaction events & Relay control
- Optical port for local communication based on DLMS / COSEM protocol

### COMMUNICATION FEATURES

- Built-in RF/Cellular Replaceable Communication Modem
- On demand two-way communication
- Event reporting to AMI server in case of critical tamper and anomalies
- Plug and play deployment
- Secured transactions with meter
- RTC Time Synchronization
- DLMS/COSEM based open standard

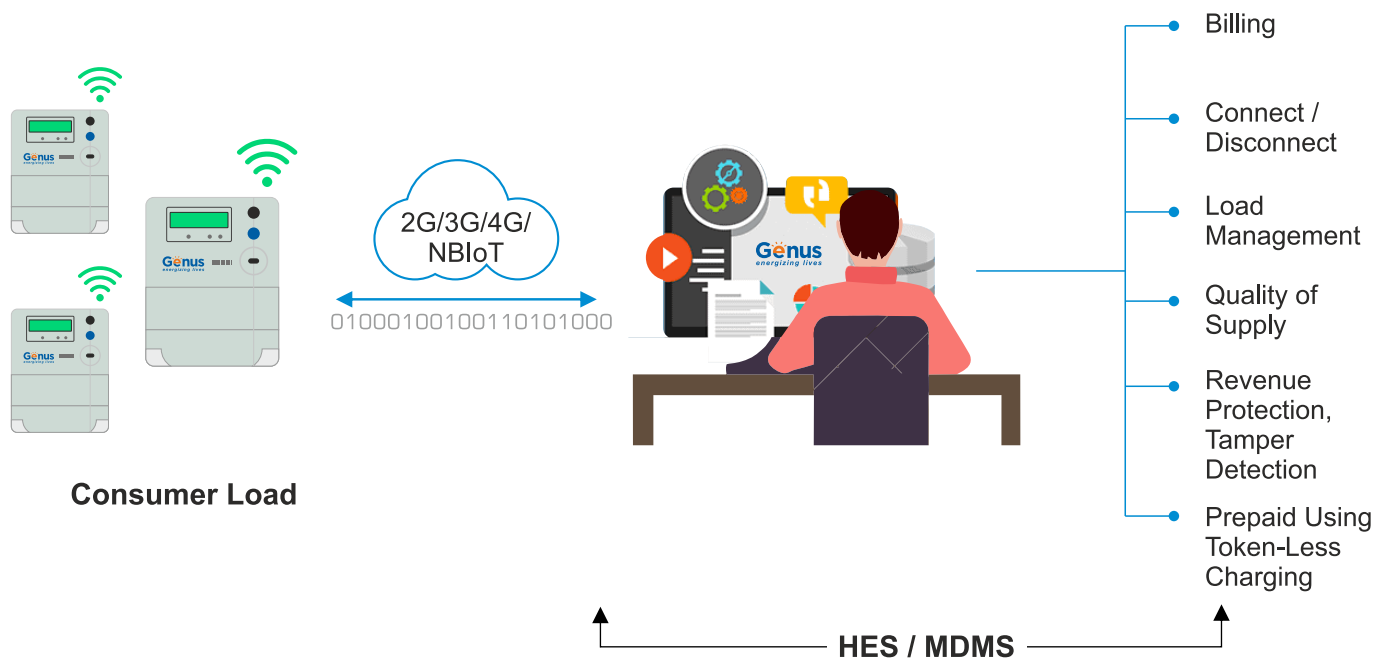
### CONTROL FEATURES

- Peak Load Management (PLM) supports two load limits and local relay control
- Remote connect and disconnect
- Remote management and control if theft/pilferage is detected
- Auto connect in case of load reduction to acceptable limits
- Power quality management in case of low / over voltage etc

## TECHNICAL SPECIFICATIONS

Standards: IEC 62052-11, IEC 62053-21/23, IEC 62054-21, IS 13779, IS 16444, IS15959

Connection Type	Three Phase 4 wire direct connected	LED Indicators	LED Pulse imp/kWh, LED Network status
Standards	IEC 62052-11, IEC 62053-21 IS 13779, IS 16444, IS 15959, CBIP-325	Communication Ports	Optical Port IEC 62056-21 Modular GSM/GPRS/2G/3G/4G/NBLoT Dual Band 900/1800 MHz SIM card exchangeable/replaceable in field External Antenna (option)
Metrology Accuracy	Class-1		
Rated Voltage	230V/240V (-40% to +20%)		
Rate Current	Ib (Imax) A=10(60)A, 20(100)A Withstands 120% Imax		
Starting Current	0.4% Ib	Communication Protocol	DLMS COSEM
Frequency	50Hz ± 5%	Operating Temperature Range	-10°C to +55°C
Burden-Voltage Circuit	<5W / 15VA	Storage Temperature Range	-25°C to +70°C
Burden-Current Circuit	<4VA	Relative Humidity	Up to 95% Non condensing
Load Contactor	Latching relay in Three Phase Max Current 120A	Degree of Protection	IP51
Display	STN LCD with Backlight		



Corporate Office:

**Genus Power Infrastructures Ltd.**  
(A Kailash Group Company)

SPL-3, RIICO Industrial Area, Sitapura, Tonk Road, Jaipur-302022, (Raj.), INDIA  
T. +91-141-7102400/500 | F. +91-141-2770319, 7102503  
Email: metering\_exports@genus.in | www.genuspower.com