

Saksham 145

SINGLE PHASE SMART METER WITH INTEGRATED CELLULAR / RF MODULE

SKM 145 is an ideal fit for Advanced Metering Infrastructure (AMI) systems intended for load management, multi-rate / Time-of-Use and anti-theft metering of residential and light commercial consumers with single-phase service connections. It measures, collects, analyzes, controls energy usage and communications with Head-End-System either on request or on a schedule. This gives unparalleled end-to-end visibility to the utilities into their distribution networks.



Advance Revenue Realization



Demand Side Management



End-to-End Security



Consumer Engagement



Hassle Free Tariff Update



Remote Disconnect / Reconnect



Always Up to Date

FEATURES

METERING FEATURES

- Single Phase direct connected smart meter
- Android Application for consumers to view Consumption Details
- Accuracy Class 1.0
- Maximum Demand kW measurement
- TOU metering with active & passive calendars, each having two seasons with up to 8-registers and 8 time zones per day
- Last 6 months billing history
- Last 35 days load profile data and daily energy profile data
- Power Quality Information
- Voltage Sags, Voltage Swells, Long power failures, Event logging
- Transaction Events & Relay control
- Optical port for local communication based on DLMS/COSEM protocol

COMMUNICATION FEATURES

- Built-in RF/Cellular Replaceable modem
- Open Communication Protocol DLMS/COSEM
- On demand two-way communication
- Event reporting to AMI server in case of critical tamper and anomalies
- Plug and play deployment
- Secured transactions with meter
- RTC Time Synchronization

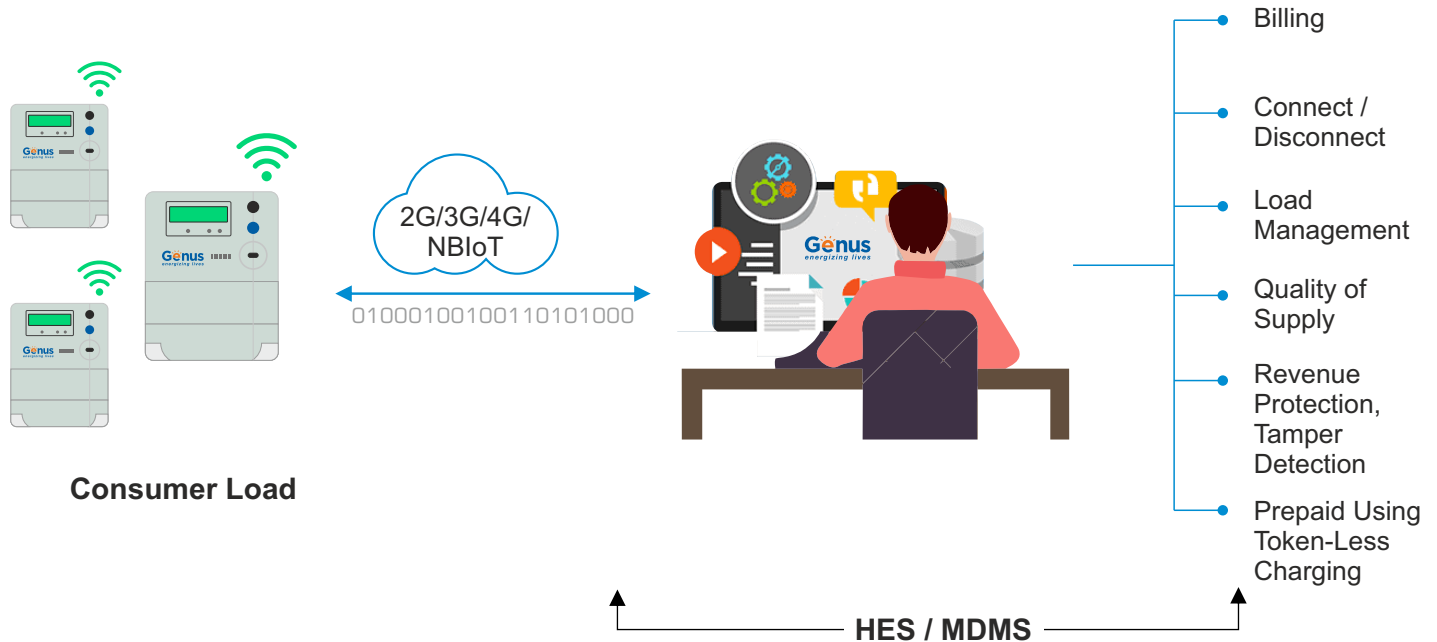
CONTROL FEATURES

- Remote connect and disconnect
- Remote Management and control if Theft/Pilferage is detected
- Disconnection on over power drawn & auto reconnect in case load is reduced
- Power Quality Management in case of Low/Over Voltage etc
- Auto connect in case of load reduction to acceptable limits
- Peak Load Management (PLM)

TECHNICAL SPECIFICATIONS

Standards: IEC 62052-11, IEC 62053-21/23, IS 13779, IS 16444

Connection Type	Single Phase 2 wire direct connected	LED Indicators	LED Pulse Imp/kWh, LED Network status
Standards	IS 13779, IS 16444, CBIP 325 IEC 62052-11, IEC 62053-21	Communication Ports	Optical Port IEC 62056-21 Modular GSM/GPRS/2G/3G/4G/NBLoT Dual Band 900/1800 MHz SIM card exchangeable/replaceable in field External Antenna (optional)
Metrology Accuracy	Class-1		
Rated Voltage	230V / 240V (-40% to +20%)		
Rate Current	Ib (Imax) A=10(60)A, 5(60)A, 5(100)A Withstands 120% Imax		
Starting Current	0.4% Ib	Communication Protocol	DLMS / COSEM
Frequency	50Hz ± 5%	Operating Temperature Range	-10°C to +55°C
Burden-Voltage Circuit	5W /15VA	Storage Temperature Range	-25°C to +70°C
Burden-Current Circuit	<4VA	Operating Humidity	Up to 95%, Non condensing
Load Contactor	Latching relay in phase (phase + neutral)	Degree of Protection	IP51
Display	STN LCD with Backlight		



Corporate Office:

Genus Power Infrastructures Ltd.
(A Kailash Group Company)

SPL-3, RIICO Industrial Area, Sitapura, Tonk Road, Jaipur-302022, (Raj.), INDIA
T. +91-141-7102400/500 | F. +91-141-2770319, 7102503
Email: metering_exports@genus.in, metering@genus.in | www.genuspower.com